

Infusion Tea and Coffee Brewer

Features

Perfect iced or hot tea or coffee from a brewer less than 30.5cm wide

- Brew 3 beverages from one model, less than 12" (30.5 cm) wide.
- Large tank provides back-to-back brewing capacity.
- Two programmable batch switches allow full and half batch brewing of iced tea.
- Brews into most BUNN iced tea dispensers and airpots.
- BrewWISE® intelligence with pre-infusion and pulse brew for maximum flavor extraction. Digital temperature control and cold brew lockout.
- Digital display in English and Spanish for easier programming and control. Advertising messages and machine status also displayed. Display capable of showing English or Metric measurements.
- Brew counter keeps track of how many batches brewed.
- Additional iced coffee recipe included.
- Integrated flip tray converts to three positions: thermal carafe, airpot and tea dispenser.
- Includes two funnels for tea and coffee.
- Brew capacity varies by model. See back for details.



Shown with TDO-4

ITCB with integrated flip tray

ITCB

(dispensers not included)

Dimensions (Tall):

34.37" H x 11.53" W x 23.78" D
(87.3cm H x 29.3cm W x 60.4cm D)

Dimensions (Standard):

31.12" H x 11.53" W x 23.78" D
(79.1cm H x 29.3cm W x 60.4cm D)

ITCB	Tea Dispensers	ThermoFresh Servers
65.4cm trunk	TD4, TDS-3, TDS-3.5, TDO-4	1gal (3.8L) (with base)
73.7cm trunk	TD4, TD4T, TDS-3, TDS-3.5, TDO-4, TDO-5, TDO-N-3.5, TDO-N-4	1gal, 1.5gal (5.7L) (with base)

For current specification sheets and other information, go to www.bunn.com.

International models may vary in appearance.

Related Products

Easy Clear® EQHP-TEA

Product No. : 39000.0007

Replacement Cartridge

Product No. : 39000.1007



Easy Clear® EQHP-10

Product No.: 39000.0000

Replacement Cartridge

Product No.: 39000.1000

Single/Dual Filter Pack (500)

Product No. : 20100.0000

Dimensions: 5 1/4" Base x 3 3/4" Sidewall



TDO-4 Tea Dispenser

(solid lid)

Product No. : 34100.0000

TDO-4 Tea Dispenser

(brew-through lid)

Product No. : 34100.0002



TDO-N-3.5 Tea Dispenser

Product No. : 39600.0001

Airpot Booster-Short (13.1cm)

Product No. : 35976.0002

Airpot Booster-Tall (21.3cm)

Product No. : 35976.0003



2.5 litre Lever-Action Airpot

Product No. : 32125.0000 (single)

Product No. : 32125.0100 (6 units)

3.0 litre Lever-Action Airpot

Product No. : 32130.0000 (single)

Product No. : 32130.0100 (6 units)

3.8 litre Lever-Action Airpot

Product No.: 36725.0000 (single)

Product No.: 36725.0100 (6 units)



Dimensions & Specifications

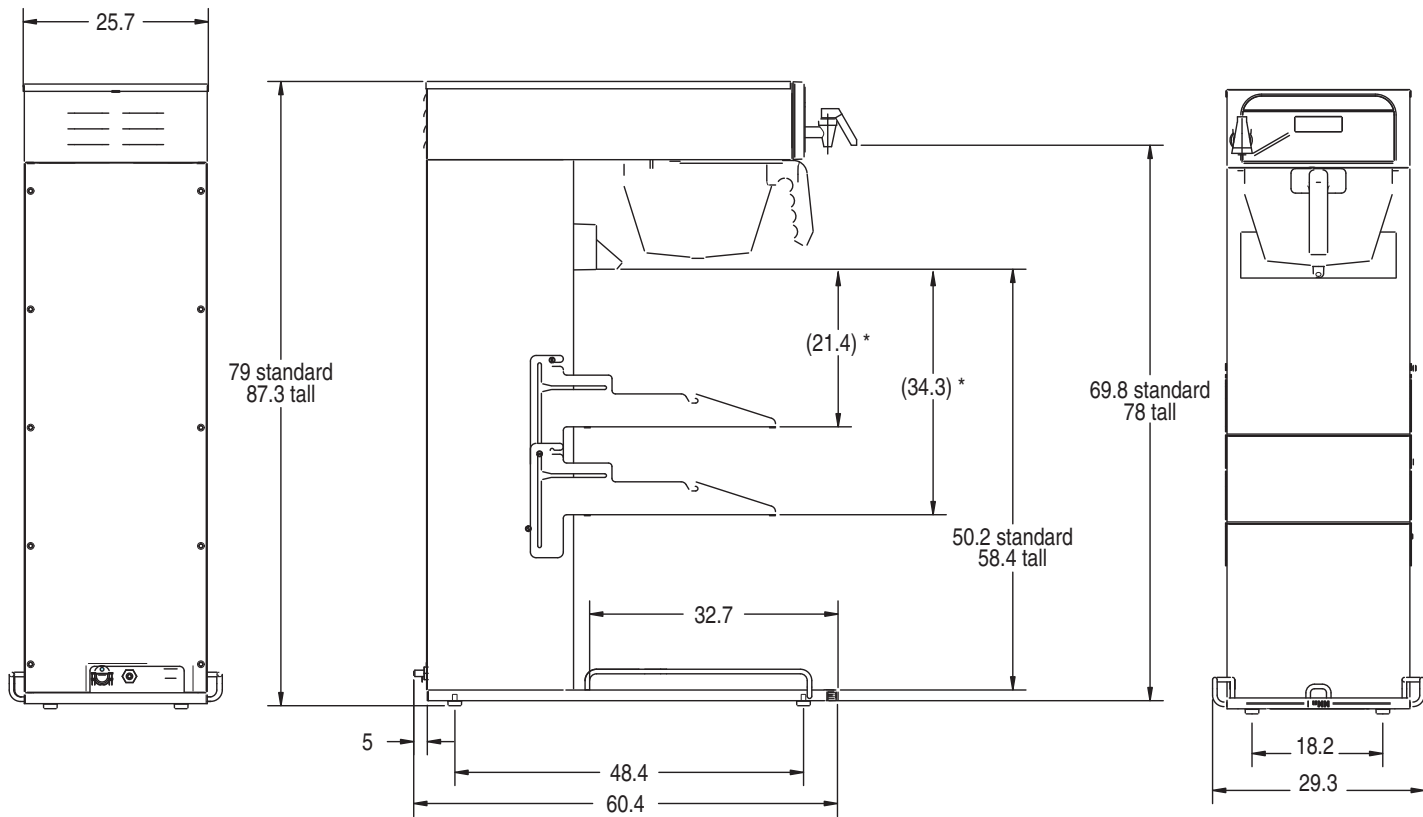
Model	Product #	Volts	Amps	Total Watts	Brewing Capacity	Shipping Weight	Cord	Agency
ITCBA w/flip tray, standard 25.75" (65.4cm) trunk	35700.0022	230	14	3200	7.5 gal/hr (28.3 L/hr.)	50 lbs. (27.2 kg)	No	CE
ITCBA w/flip tray, tall 29" (73.7cm) trunk	35700.0029	230	14	3200	7.5 gal./hr. (28.3 L/hr.)	50 lbs. (27.2 kg)	No	CE
ITCBA w/flip tray, standard 25.75" (65.4cm) trunk	35700.0048	230	14	3200	7.5 gal/hr (28.3 L/hr.)	50 lbs. (27.2 kg)	No	N
ITCBA w/flip tray, tall 29" (73.7cm) trunk	35700.0049	230	14	3200	7.5 gal./hr. (28.3 L/hr.)	50 lbs. (27.2 kg)	No	N
ITCBA w/flip tray, tall 29" (73.7cm) trunk	35700.0053	200	17.5	3500	7.5 gal./hr. (28.3 L/hr.)	50 lbs. (27.2 kg)	No	UL

Brewing capacity: based on incoming water temp of 60°F/15°C (140°C/60°F rise) per 1/2 gallon (1.89 litres) brew time of 4 minutes.

Electrical: 230 volt models require 2-wires plus ground service rated 220-240V, single phase, 50/60 Hz.

200 volt model requires 2-wires plus ground service, single phase, 50/60 Hz.

Plumbing: 20-90 psi (138-621 kPa). Model supplied with a 1/4" male flare fitting.



* Flip tray to funnel dimensions are the same for both trunk heights.

Bunn-O-Matic® Corporation - 1400 Stevenson Drive Springfield, Illinois 62703 • USA • +1-217-529-6601 • Fax +1-217-529-2827 • www.bunn.com

BUNN® practices continuous product research and improvement. We reserve the right to change specifications and product design without notice. Such revisions do not entitle the buyer to corresponding changes, improvements, additions or replacements for previously purchased equipment.

All dimensions shown in centimeters.

1/13 © Bunn-O-Matic Corporation